



---

ONE  
APART  
FROM  
THE  
WORLD

---

# A VISION THAT WILL TOUCH THE SKIES AND YOUR SOUL TOO

---

Some visions are meant to achieve more than touch and impact a city's skyline.

They are envisioned to rivet your senses and open you to new possibilities.

When your life spaces rises 100 to 300 feet above the ground, things will cease from getting to you and you will therefore, enjoy an absolute peace of mind.

Get set to transform your routine into a sublime experience of extraordinary spaces and unparalleled sophistication.

Arriving, a statement in lifestyle that's so unique and evolved, it is **ONE OF A KIND**



# CREATE NEW BENCHMARKS, ONE ABOVE THE REST

Witness the shape of towering evolution with one of the tallest landmarks (30 floors) amidst the landscape of Matunga. Prepare for a sight that will open you to the power of possibility while rewarding you with the privileges of upgradation.

PRESENTING



A whole new starting point of luxury lifestyle that begins where conventional lifestyle residences find their limit.



COMMERCIAL WING  
(PHASE 2)

RESIDENTIAL WING  
(PHASE 1)



Matunga Gymkhana	0.25 km
Five Gardens	1.00 km
King Circle Flyover	0.45 km
Ruia & Poddar College	0.27 km
Welingkar Institute	0.24 km
Don Bosco School	1.20 km

# A DESTINATION THAT IS NOT JUST EXTRAVAGANT, BUT I-SMART

---

A home at Jade Avenue assures you of an environment that comes with thoughtful amenities for sustainable, responsible, convenient and hassle-free living. The Aluminium Shuttering technology which makes your home earthquake resistant and less prone to maintenance work is another key advantage.





Artistic Impression

ENJOY THE BLOOMS IN YOUR COURTYARD  
[#bloomsinyourcourtyard](#)

PODIUM LANDSCAPE



Artistic impression

EMBRACE THE OPEN VIEW TO A JOYFUL WORLD  
#leisuretimes

OPEN COURTYARD

# SEE EVERYDAY AS A SUM TOTAL OF MOMENTS, NOT HOURS.

---

With a world of amenities for an indulgent and luxurious lifestyle, you will enjoy the freedom to transform hours into celebrations and days into memories.

\*More than 10,000 square feet recreation area with Landscaped Gardens / Rooftop Lawn



Fitness Centre, Steam, Gaming Zone and Multipurpose Room. Amenities from fitness center to indoor games to open courtyard and much more.

\*Membership facility to be availed.





Artistic impression

SOME WORK AND SOME PLAY ADD BRILLIANCE TO YOUR DAY  
#stressbusters



Artistic impression

FOR ALL THE FITNESS FREAKS & HEALTH ENTHUSIASTS  
#healthylifestyle



\*GYM



Artistic impression

CREATE IMPRESSIONS THAT LAST FOREVER  
[#lastingfirstimpressions](#)

GRAND ENTRANCE PORCH



Artistic Impression of **South Tower**

A FASCINATING WORLD GREET'S YOU AT THE DOOR  
**#grandwelcome**

**DOUBLE HEIGHT ENTRANCE LOBBY**

# ENJOY THE BREEZE WITH YOUR SUNDECKS

---

Standing above the world does bring about a feeling that's hard to explain, and even harder to get over. With homes that tower above traditional lifestyle limits, you'll enter a privileged club of residents who'll have the best of city views reserved for their eyes alone. Go ahead; enjoy your coffee in the sundecks!



#splendidsundecks

AN EXTRAORDINARY  
VIEW THAT IS  
**ONLY FOR  
PRIVILEGED FEW**

---



Artistic impression

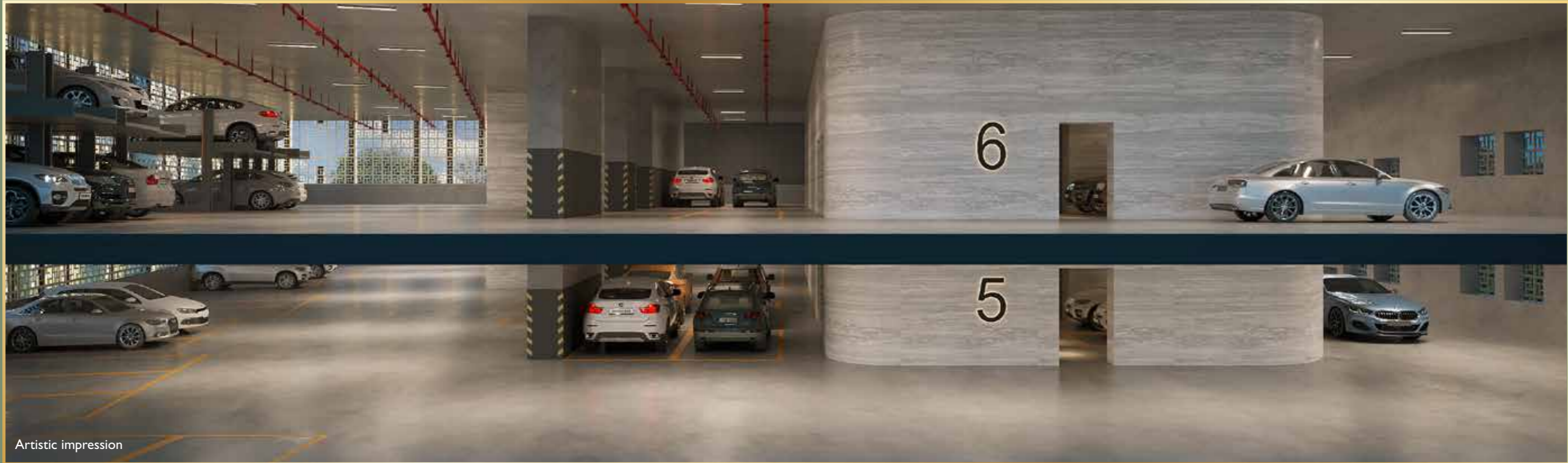


A SPACE THAT  
MAKES YOUR HOME WITH  
A TOUCH OF CLASS

---

Feel the power of your destiny the moment you step into a spacious home at Jade Avenue. Available in a range that ascends from 2 to 3 BHKs with limited special edition larger formats, every home is designed to celebrate the fact that you drive your destiny, and create your own class.

#ultraspacioushomes



Artistic impression

## EXCLUSIVE SPACE, ANOTHER SIGN YOUR WORLD IS TRULY ONE OF ITS KIND.

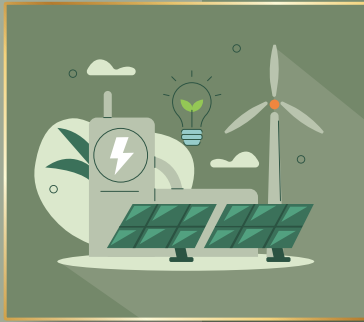
Enjoy the distinct privilege of 20 feet  
Driveways / Basements / Podium  
floors dedicated for car parkings  
accessed by 2 way ramps.

#hasslefreedriving

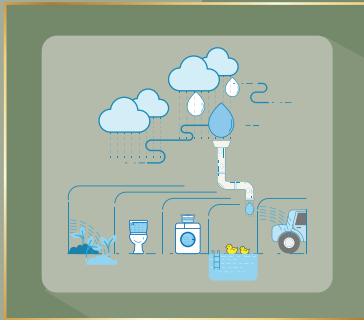


# FEATURES THAT REFLECT OUR CARE

---



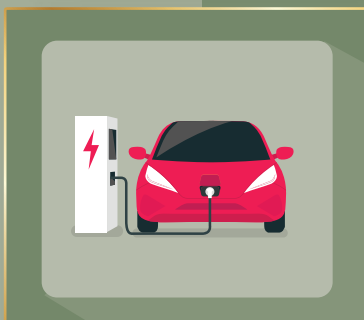
Energy Efficient Pre-Certified Building / Green Building Gold Category (IGBC)



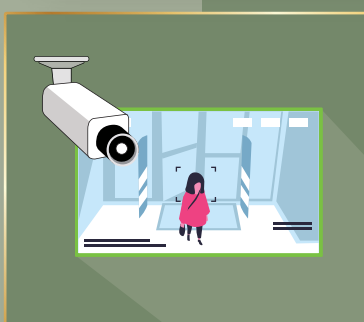
Rainwater Harvesting & Sewage Treatment Plant (STP)



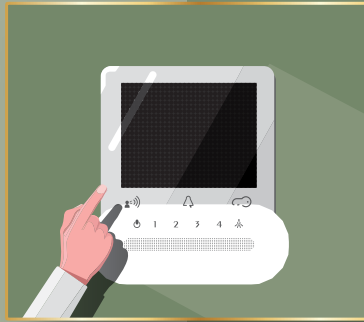
Power Backup for Fire Lifts and Common Essential Lighting



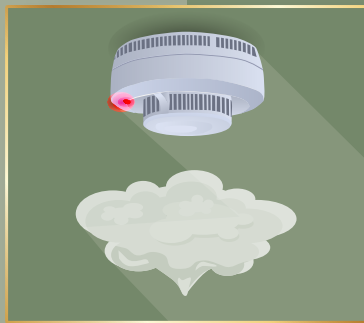
EV Charging Points#  
#On all parking floors



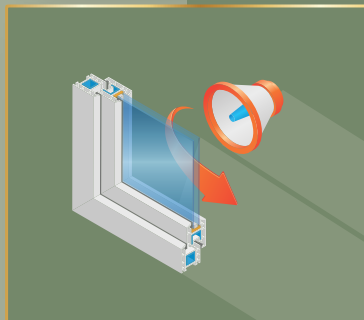
CCTV Surveillance of Common Areas (3-Tier Security)



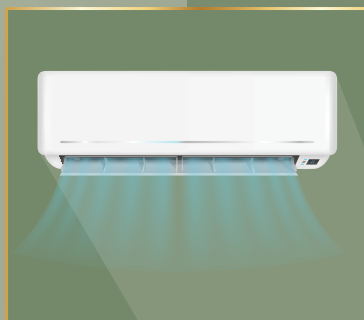
Video Door  
Phone & Intercom  
+Wifi Connectivity



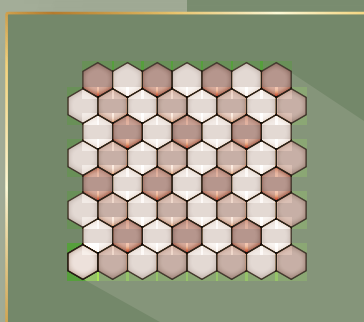
Sprinklers and  
Smoke Detection System  
(with Robust Fire Fighting Norms)



Soundproof  
Windows



Air Conditioned Homes#  
#If Finished Flat availed



Anti-skid surfaces and  
access control for  
common area

# PILLARS OF STRENGTH PROJECT CONSULTANTS

---

## DEVELOPER

Jairaj Happy Homes / Happy Home Group  
[www.happyhomeprojects.com](http://www.happyhomeprojects.com)

## DESIGN ARCHITECT

Shri. Sandeep Shikre  
M/S. Sandeep Shikre & Associates (SSA)  
[www.ssaarchitects.com](http://www.ssaarchitects.com)

## MUNICIPAL ARCHITECT

Shri. Milind Changani  
M/S. B.N. Shah & Associates  
[www.studioc.in](http://www.studioc.in)

## STRUCTURAL CONSULTANT

Mr. Achyut Watve  
M/S. JW Consultant, LLP  
[www.jwconsultants.in](http://www.jwconsultants.in)

## MEP CONSULTANT

Mr. Ugendra Chettiar  
M/S. Chettiar Consulting Engineers  
[www.cce.ind.in](http://www.cce.ind.in)

## GEOTECHNICAL CONSULTANT

Shri. Jaydeep Wagh  
M/S. GeoCon International Pvt. Ltd.  
[www.geoconinternational.com](http://www.geoconinternational.com)

## ENVIRONMENTAL CONSULTANT

M/S. Ultratech Environmental  
Consultancy & Laboratory  
[www.ultratech.in](http://www.ultratech.in)

## PROJECT FINANCE BY & HOME LOANS

Tata Capital & Housing Finance Ltd.  
[www.tatacapital.com](http://www.tatacapital.com)

## BANKERS

ICICI Bank / Bank of India / HDFC Bank



*Jade Gardens*  
 Peaceful Living. Premium Lifestyle.  
 (BKC)

# OUR LANDMARK PROJECTS

---



JADE IMPERIAL  
 ——— THOUGHTFULLY LAVISH ———  
 (MATUNGA CR)



*Jade Vedant*  
 (MATUNGA CR)



  
 Kalma Kunj  
 (FIVE GARDENS)



  
 514/C  
 GOLDFINCH  
 (MATUNGA CR)



Jade Ganeshā  
 (MATUNGA CR)



SIDDHĀCHAL  
 (MATUNGA CR)

A  
DIFFERENT  
WORLD,  
ONE OF A KIND  
EXPERIENCE  
AWAITS YOU

---

Artistic impression



Jade Avenue has been registered by Jairaj Happy Homes ("The Promoter") as a mix user project comprising of Residential Wing & Commercial Wing in phases. The Residential Wing is having MahaRERA No. P51900033215, the details of which are available on the website <https://maharera.mahaonline.gov.in> under registered projects.

LANDMARK BY



HAPPY HOME®

Enriching Lifestyle Since 1979

[www.jadeavenue.in](http://www.jadeavenue.in)

Site : Jade Avenue, Residential Towers, Off L N Road, Bhimani Street,  
Matunga CR, Mumbai 400019. ☎98201 91111



Jade Avenue has been registered by Jairaj Happy Homes ("The Promoter") as a mix user project comprising of Residential Wing & Commercial Wing in phases. The Residential Wing is having MahaRERA No. P51900033215, the details of which are available on the website <https://maharera.mahaonline.gov.in> under registered projects.

**DISCLAIMER:** This ad/Brochure and its images are purely conceptual and for representation purpose only and not legal offering to its recipient by the Promoter/Developer nor will it be a part of any binding agreement. This is not an offer, invitation to offer and /or commitment of any nature. All specifications, drawings, amenities, facilities, parameters, rates etc. shown in this ad/ brochure are subject to change as per the approval from the competent authorities. All units are Unfurnished, and furnishing, fixtures, furniture shown are for aesthetic representation purpose only and are not a part of the flat/unit offered for sale. Tolerance of +/-3% is possible in unit areas on account of design and construction variances. The Promoter/Developer reserves sole rights to amend number of floors, number of units, elevation, color schemes, specifications, amenities etc. in the interest of betterment of the project as per its registration with MahaRERA. All transactions shall be subject to terms and conditions mentioned in Agreement for Sale to be entered into by the Developer and recipient and the terms and condition of Agreement for sale shall prevail. All dimensions are approximate and subject to construction variance. The final discretion remains with the Promoter/Developer.